

How do I download a Techlink parameter file to the EPM programmer?
Just follow the simple steps below.

1) Before you start
Check you have:



- One of the following options:
- USB - RS232 serial converter
 - RS232 9 pin female to male cable (if a 232 port is available on your PC)

2) Install:

- Techlink software
- Drivers for serial converter



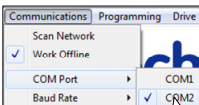
3) Connect:



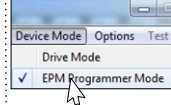
4) EPM programmer on:



6) Select COM port:



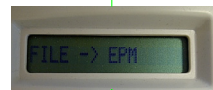
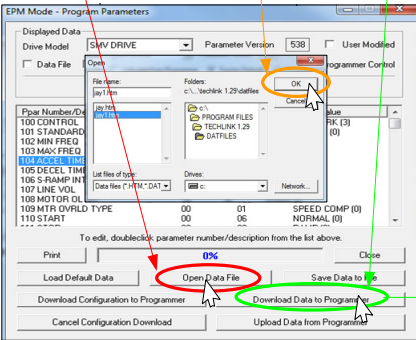
7) Select EPM mode:



8) Open Data file

9) Select Data file and click OK

10) Download Data file



11) Set-Up complete

Hints and tips



Didn't connect? Check:

- Start/control panel/device manager/ports – Check serial converter appears in ports when plugged in – is COM port correct?